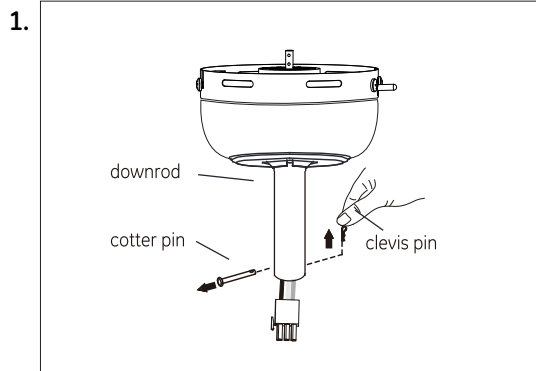


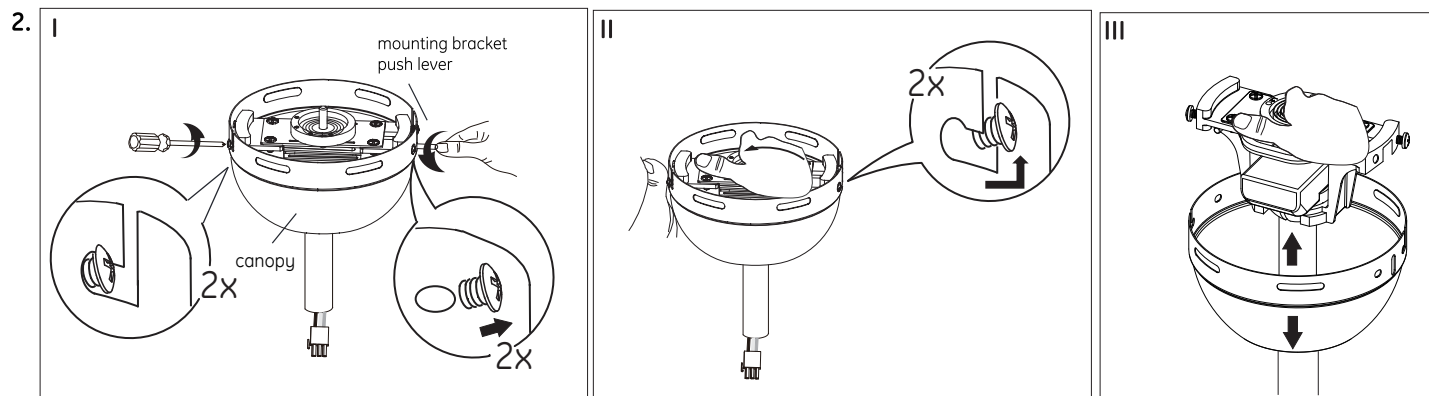
Instructions: Changing Existing Downrod to Longer Downrod (sold separately)

FOR MODEL WITH REMOTE RECEIVER INSIDE CANOPY

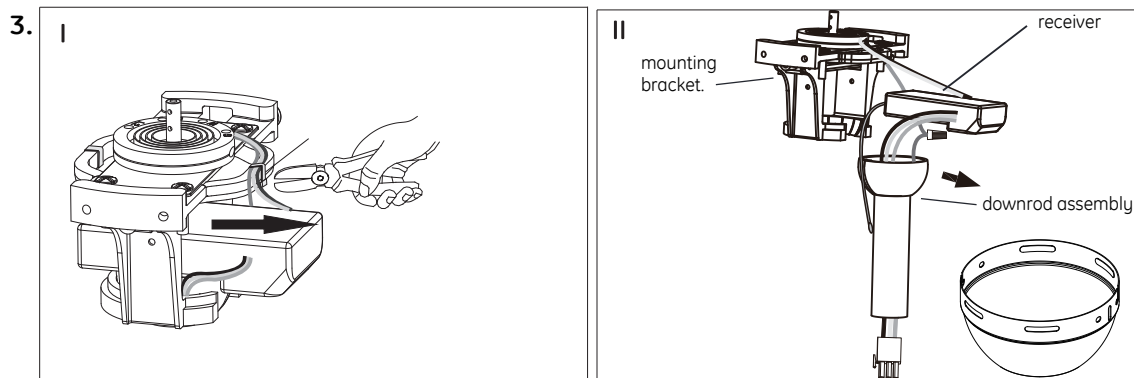
Disassemble Canopy and Remove Downrod from Canopy



Remove the cotter pin and clevis pin from the downrod.

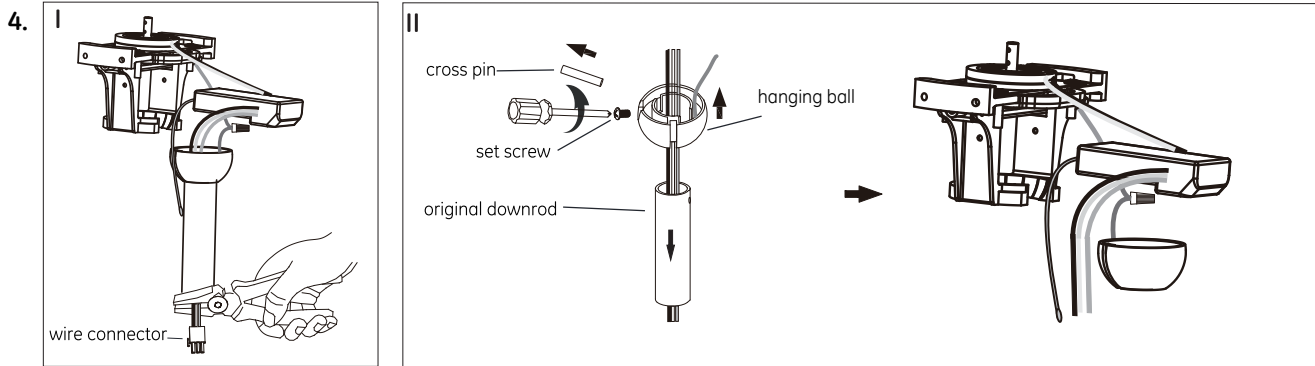


To remove canopy, I) loosen (but do not remove) the two screws in L slots, then remove the other two screws and the mounting bracket push lever from the canopy. II) Hold the mounting bracket and turn the canopy counter clockwise. III) Remove the canopy.



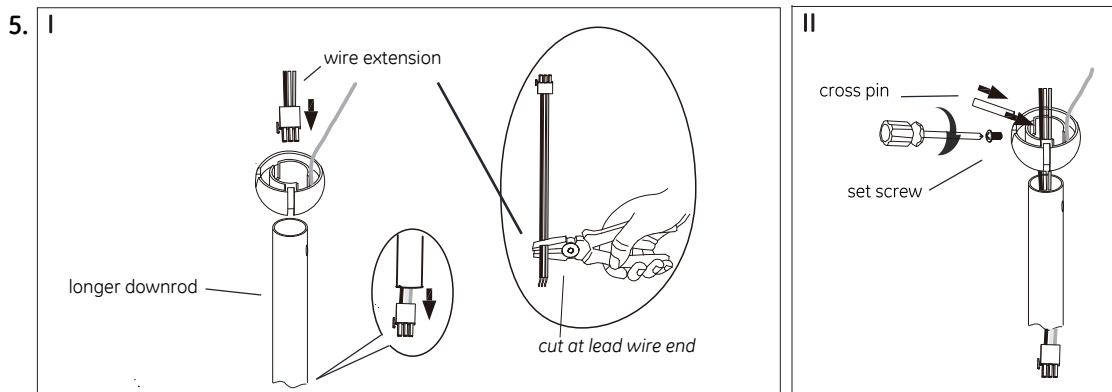
I) Cut the **nylon ties** which hold the green ground wire, the lead wires and the red antenna of the receiver (**be carefull not to cut the wires and the antenna**). II) Remove the receiver and downrod assembly from the mounting bracket.

Instructions: Changing Existing Downrod to Longer Downrod (sold separately)

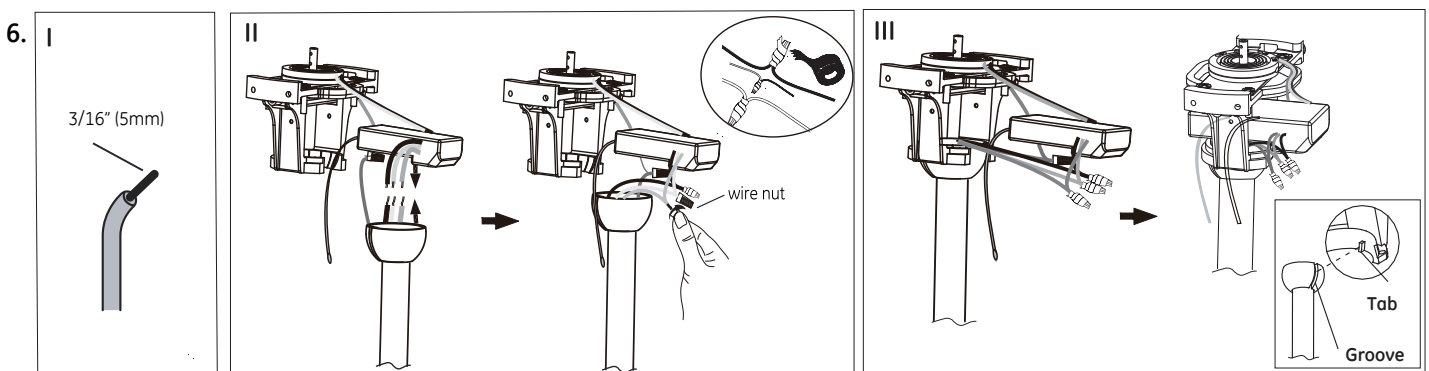


I) Cut the wire at lower end to remove the wire connector. II) Remove the set screw and cross pin on the hanging ball to detach the original downrod.

Install New Downrod and Reassemble Canopy System



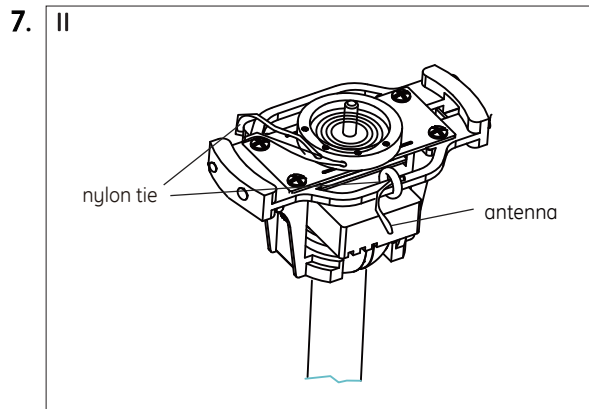
I) Feed the new longer wire extension (provided with the fan) into the hanging ball and the longer downrod, and extend over downrod about 2 inches (5cm). Cut the wire extension at lead wire end, according to the length of the downrod, if needed. II) Reassemble the hanging ball onto the downrod with the set screw and cross pin removed on previous step 4.



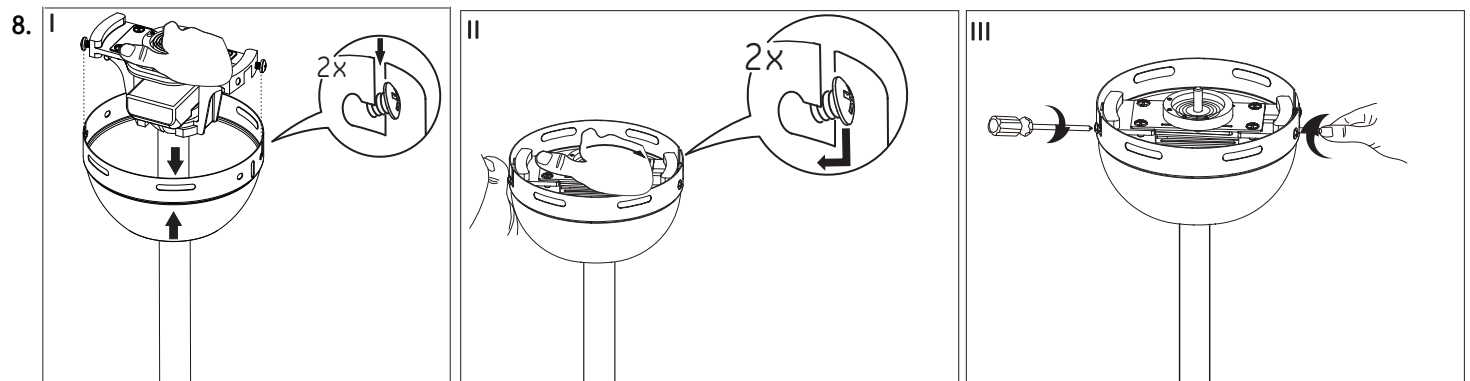
I) Strip 3/16" (5mm) of insulation from the end of each wire, if needed. II) Re-connect the wires from the receiver to the new wire extension, white to white, black to black and blue to blue, with the wire nuts provided with the fan. Secure with electrical tape. III) Re-seat the receiver (with the flat side facing ceiling) and the downrod assembly to the mounting bracket, making sure the groove of the ball is properly engaged into the tab of the mounting bracket, as shown on above figure.

Instructions: Changing Existing Downrod to Longer Downrod (sold separately)

Install New Downrod and Reassemble Canopy System (Continued)



Secure the antenna, and the green wire to the bracket with the nylon ties provided.

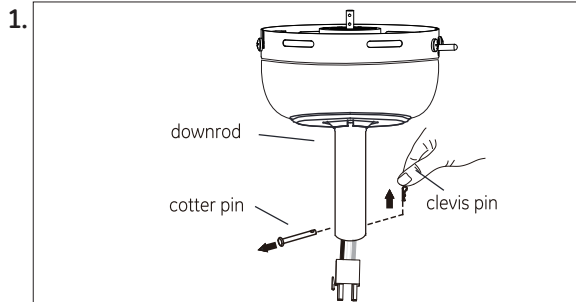


Reassemble the canopy, I) Insert canopy onto the new downrod and bracket assembly. II) Turn the canopy clockwise to lock the screws into the L slots. III) Re-attach the the two screws and the push lever removed on step 2. Once completed, follow the steps in the fan instruction manual to complete the fan installation.

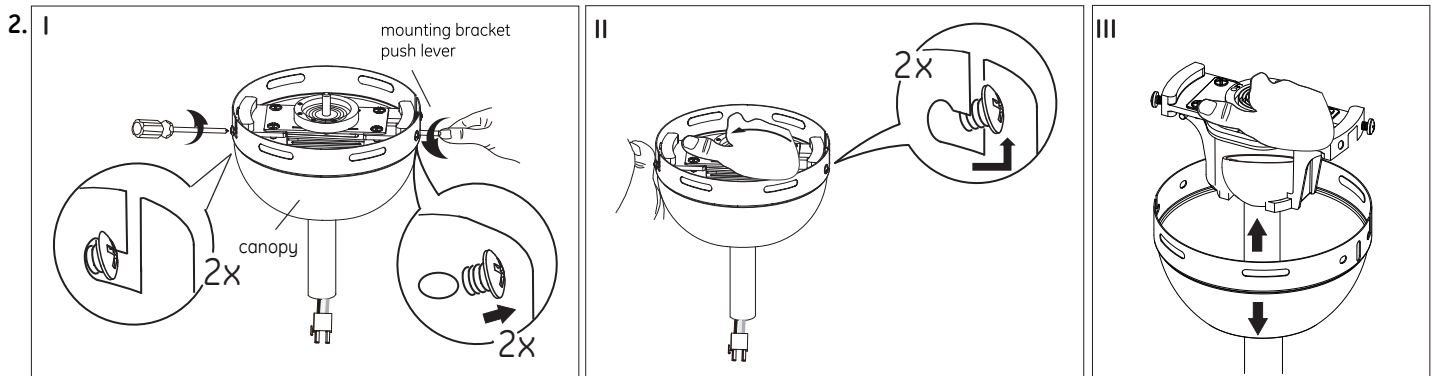
Instructions: Changing Existing Downrod to Longer Downrod (sold separately)

FOR MODEL WITHOUT REMOTE RECEIVER INSIDE CANOPY

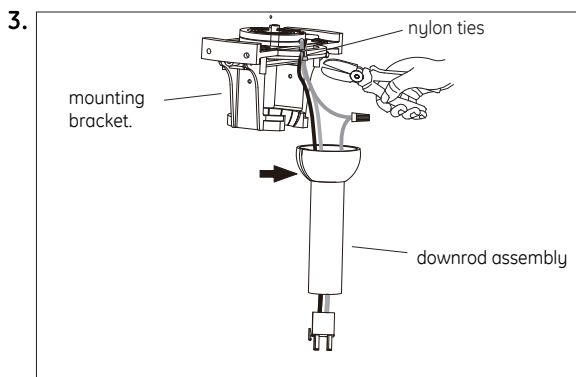
Disassemble Canopy and Remove Downrod from Canopy



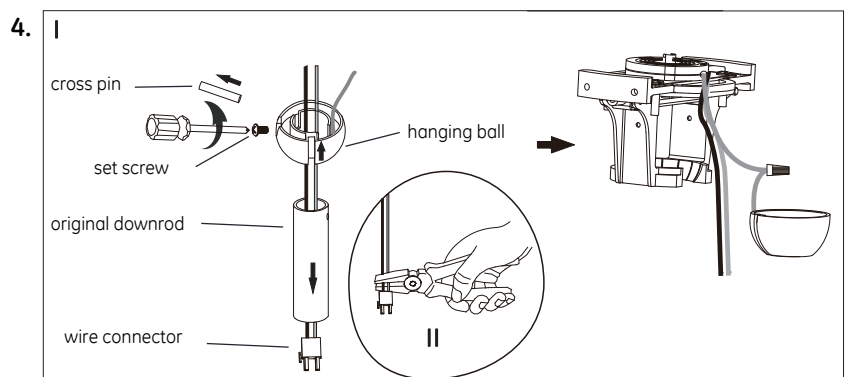
Remove the cotter pin and clevis pin from the downrod.



To remove canopy, I) loosen (but do not remove) the two screws in L slots, then remove the other two screws and the mounting bracket push lever from the canopy. II) Hold the mounting bracket and turn the canopy counter clockwise. III) Remove the canopy.



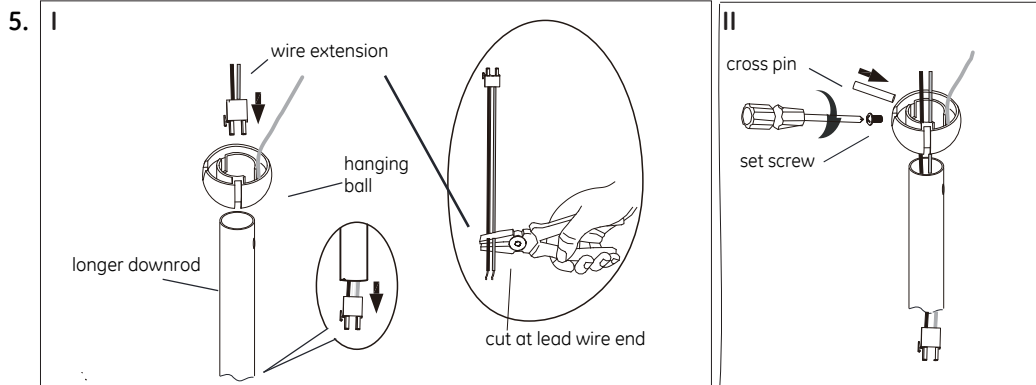
Cut the **nylon ties** which hold the green ground, the white and the black wires on the mounting bracket (**be careful not to cut the wires**), then remove the downrod assembly from the mounting bracket.



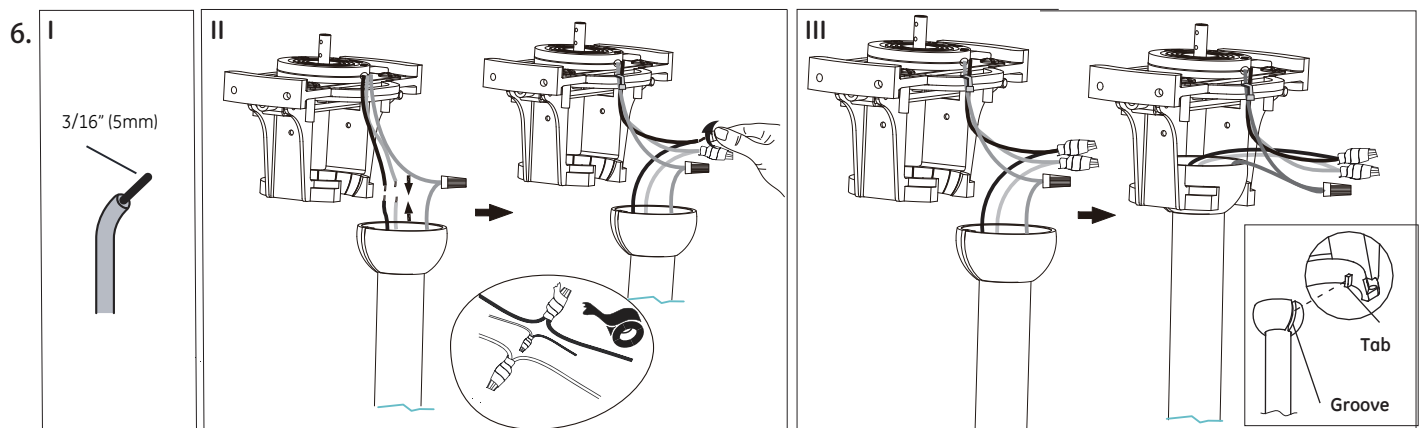
I) Remove the set screw and cross pin on the hanging ball to detach the original downrod. II) Cut the wire at lower end to remove the wire connector.

Instructions: Changing Existing Downrod to Longer Downrod (sold separately)

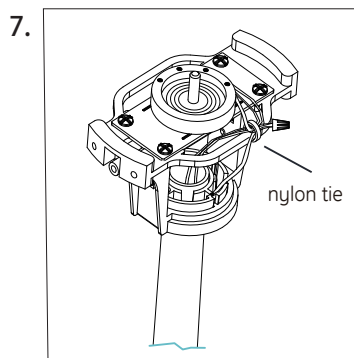
Install New Downrod and Reassemble Canopy System



I) Feed the new longer wire extension (provided with the fan) into the hanging ball and the longer downrod, and extend over downrod about 2 inches (5cm). Cut the wire extension at lead wire end, according to the length of the downrod, if needed. II) Reassemble the hanging ball onto the downrod with the set screw and cross pin removed on previous step 4.



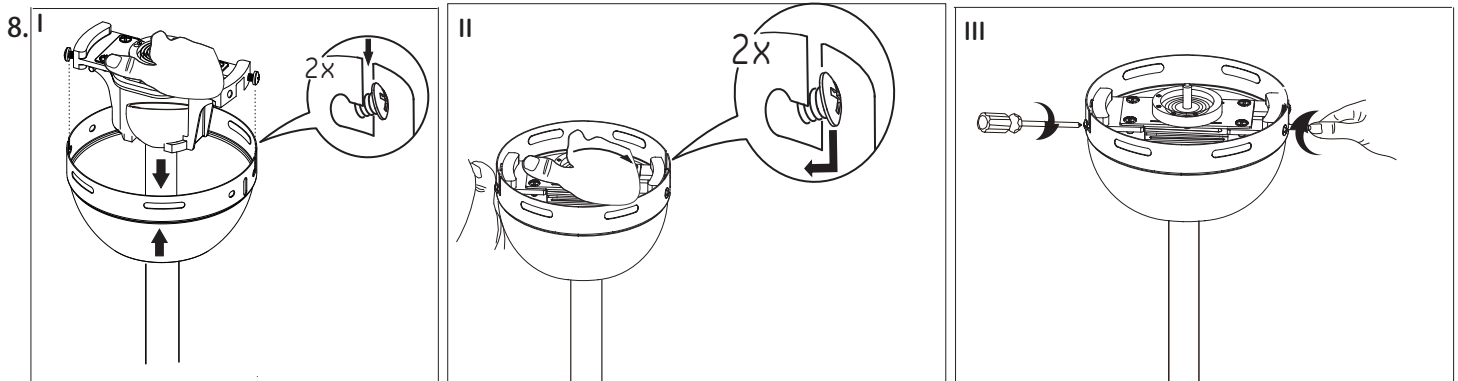
I) Strip 3/16" (5mm) of insulation from the end of each wire, if needed. II) Re-connect the wires from the mounting bracket to the new wire extension, white to white, and black to black with the wire nuts provided with the fan. Secure with electrical tape. III) Re-seat the downrod assembly to the mounting bracket, making sure the groove of the ball is properly engaged into the tab of the mounting bracket, as shown on above figure.



Secure the wires onto the mounting bracket with nylon ties as shown on the above figure.

Instructions: Changing Existing Downrod to Longer Downrod (sold separately)

Install New Downrod and Reassemble Canopy System (Continued)



Reassemble the canopy, I) Insert canopy onto the new downrod and bracket assembly. II) Turn the canopy clockwise to lock the screws into the L slots. III) Re-attach the the two screws and the push lever removed on step 2. Once completed, follow the steps in the fan instruction manual to complete the fan installation.

Contact a qualified electrician or call the Customer Care Service Team at 1-866-885-4649
Customer Service hours of operation are 9:00AM-5:00PM EST -Monday-Friday