

# User Manual

1.32 m (52 in.)

Savanna III LED Ceiling Fan

MODEL: 21243

ITM./ART.1162881

120V 60Hz, MADE IN CHINA

**Customer Assistance**

1-866-885-4649



Contact a qualified electrician or call the Customer Care Service Team at 1-866-885-4649  
Customer Service hours of operation are 9:00AM-5:00PM EST -Monday-Friday



Note: Installation videos for GE fans with SkyPlug technology  
can be viewed and downloaded on [www.gelightingandfans.com](http://www.gelightingandfans.com)

# Safety Rules

## READ AND SAVE THESE INSTRUCTIONS

**1.** To reduce the risk of electric shock, ensure electricity has been turned off at the circuit breaker or fuse box before beginning.

**2.** All electrical connections must be made in accordance with local codes, ordinances and/or the National Electric Code. Electrical installation should be performed by a qualified licensed electrician.

**3. WARNING:** to reduce the risk of electrical shock or fire, do not use this fan with any solid-state fan speed control device. It will permanently damage the electronic circuitry.

**4. CAUTION:** To reduce the risk of personal injury, use only the screws provided with the outlet box.

**5.** The weight of the fan is 6.7 kg (14.77 lb). The outlet box and support structure must be securely mounted and capable of reliably supporting a minimum of 15.9 kg (35 lb.). Use only cUL Listed outlet boxes marked "FOR FAN SUPPORT."

**6.** The fan must be mounted with a minimum of 2.1m (7 ft.) clearance from the trailing edge of the blades to the floor.

**7.** Avoid placing objects in the path of the blades.

**8.** To avoid personal injury or damage to the fan and other items, be cautious when working around or cleaning the fan.

**9.** Do not use water or detergents when cleaning the fan or fan blades. A dry dust cloth or lightly dampened cloth will be suitable for cleaning.

**10.** After making electrical connections, spliced conductors should be turned upward and pushed carefully up into the outlet box. The wires should be spread apart with the grounded conductor and the equipment-grounding conductor on one side of the outlet box and ungrounded conductor on the other side of the outlet box.

**11.** All screws must be checked and re-tightened where necessary during installation.

**12.** This fan is suitable for room sizes up to 225 square feet (20.9 square meters).



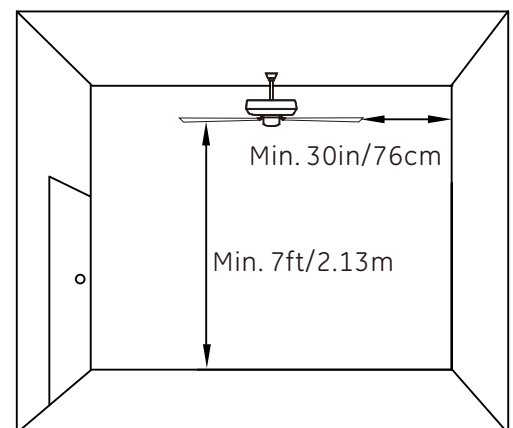
**WARNING:** To reduce the risk of fire, electric shock or personal injury, mount fan to outlet box marked acceptable for fan support with the screws provided with the outlet box.



**WARNING:** To reduce the risk of personal injury, do not bend the blade arms (also referred to as flanges), when installing the brackets, balancing the blades or cleaning the fan. Do not insert foreign objects in-between rotating fan blades.



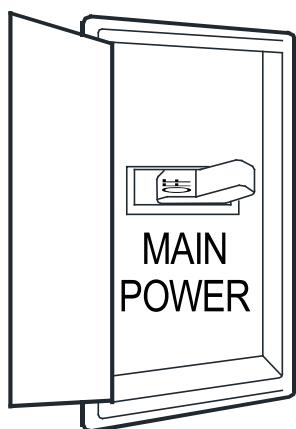
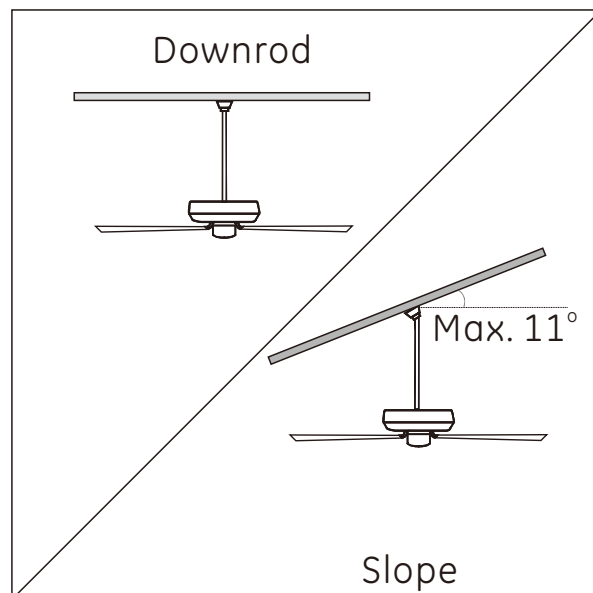
**WARNING:** To reduce the risk of fire, electric shock or personal injury, mount to outlet box marked "acceptable for fan support of 15.9 kg (35 lb.) or less" and use mounting screws provided with the outlet box. Most outlet boxes commonly used for the support of light fixtures are not acceptable for fan support and may need to be replaced. Due to the complexity of the installation of this fan, a qualified licensed electrician is strongly recommended.



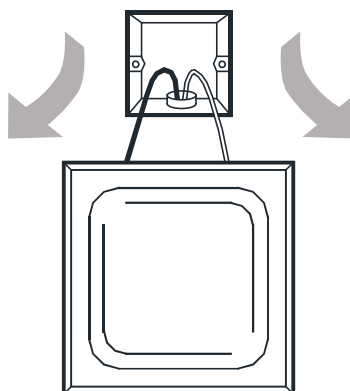
# Basic Guidelines For Working With Electricity

## SAFETY TIPS

1. Before working on a circuit, go to the main service panel and remove the fuse or turn off the breaker that controls that circuit.
2. Tape a sign to the panel warning others to leave the circuit alone while you work.
3. Before touching any wire, use a voltage tester to make sure it's not live.
4. Whenever you check for voltage in a receptacle, check both outlets; each may be controlled by a separate wiring circuit.
5. When replacing fuses, turn off the main power first. Make sure your hands and feet are dry, and place one hand behind your back to prevent electricity from making a complete circuit through your chest. Touch a plug fuse only by its insulated rim.
6. Remove cartridge fuses with fuse puller.
7. Use tools with insulated handles and ladders made of wood or fiberglass.
8. To protect children, place safety cover over any unused outlets.
9. Vaulted ceiling angle is not to exceed 11 degrees.



Shut off main power at the circuit breaker or fuse panel before removing old fixture.



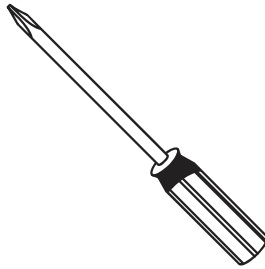
Remove old fixture. Disconnect wire.

# Tools Needed (Not Supplied)

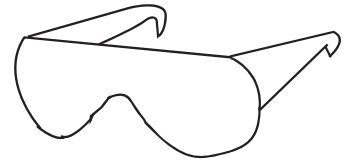
## Required



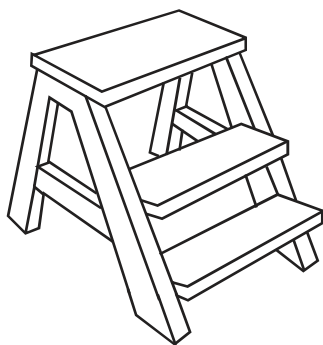
**Flathead Screwdriver**  
(1# screwhead recommended)



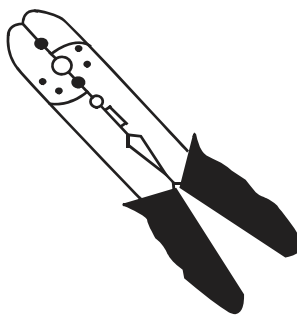
**Philips Screwdriver**



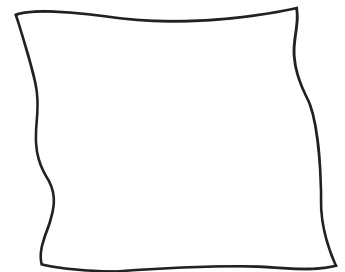
**Safety Glasses**



**Step Ladder**



**Wire Stripper**

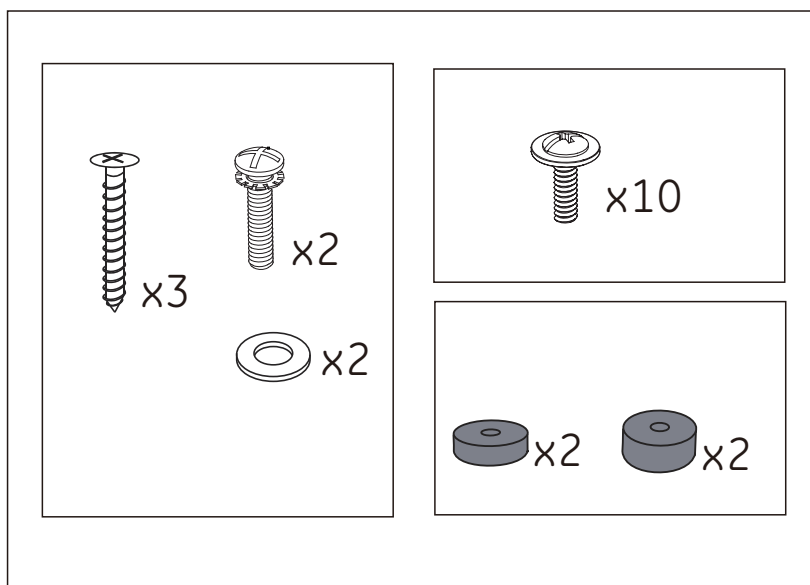


**Soft Cloth**

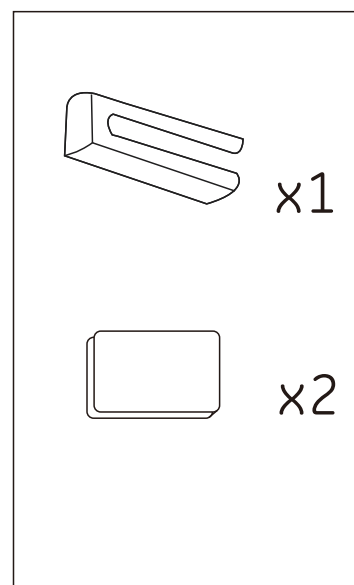
# Hardware Included

Carefully unpack and identify each part to make sure you have everything ready for installation. Lay out each part on a clean area such as a table or floor. Check to make sure you have the following:

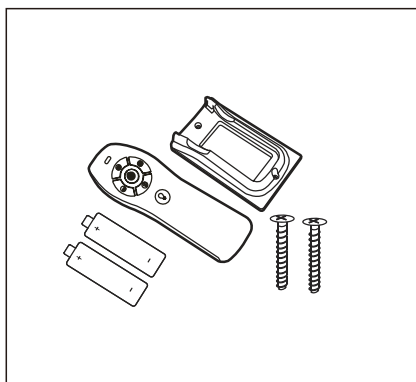
## Hardware Bag



## Blade Balancing Kit

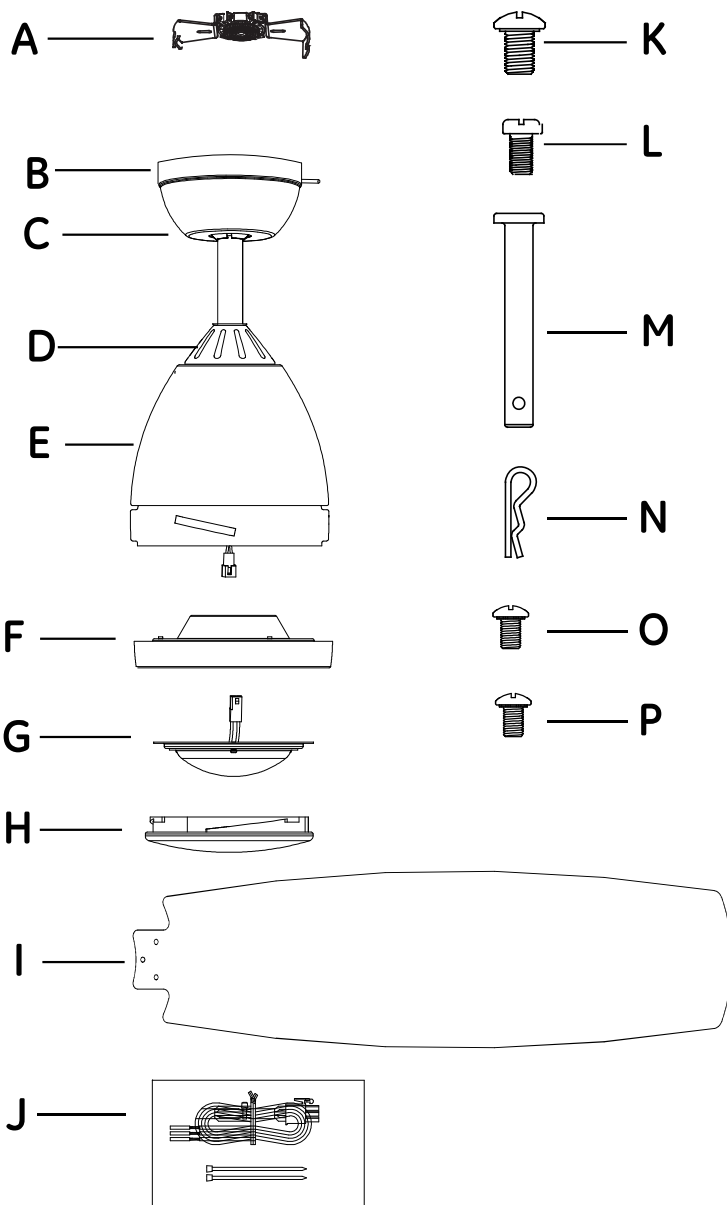


## Remote Control



# Package Contents

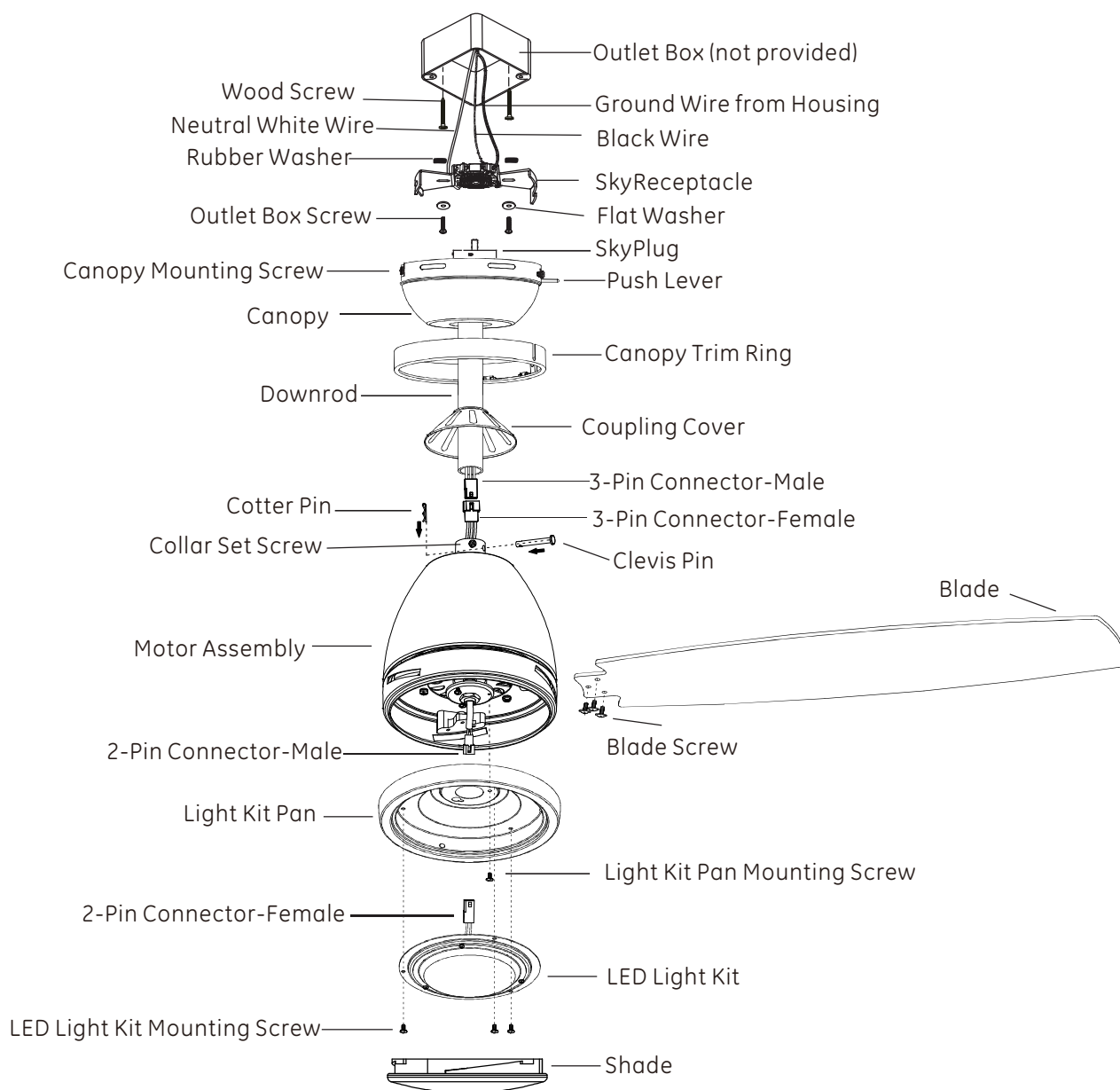
Carefully unpack and identify each part to make sure you have everything ready for installation. Lay out each part on a clean area such as a table or floor. Check to make sure you have the following:



PART	DESCRIPTION	QUANTITY
A	SkyReceptacle	1
B	Canopy trim ring	1
C	Canopy assembly	1
D	Coupling cover	1
E	Motor assembly	1
F	Light kit pan	1
G	LED light kit	1
H	Shade	1
I	Blade	3
J	Wire extension Keep this for longer downrod (option sold separately) installation. Instructions are available at <a href="http://www.gelightingandfans.com">www.gelightingandfans.com</a>	1
K	Canopy mounting screw (Preassembled to mounting bracket)	4
L	Collar set screw (Preassembled to coupling of motor assembly)	2
M	Clevis pin (Preassembled to coupling of downrod assembly)	1
N	Cotter pin (Preassembled to coupling of downrod assembly)	1
O	Mounting plate screw (Preassembled to mounting plate of motor assembly)	3
P	LED light kit mounting screw (Preassembled to metal housing)	3

# Fan Installation Drawing

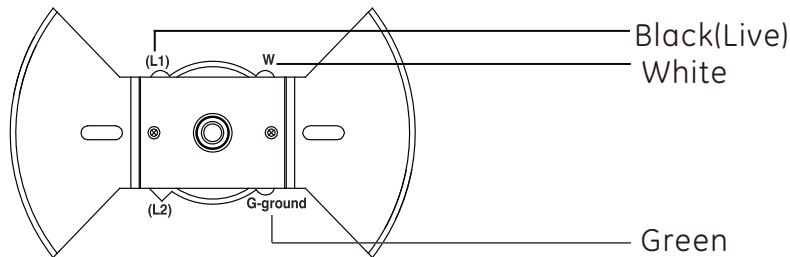
Review important safety instructions before installation.



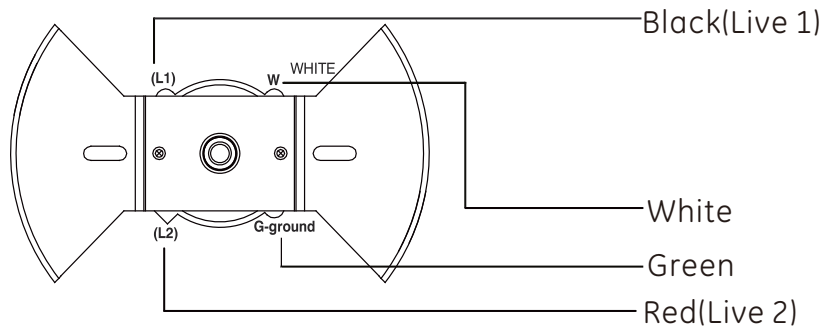
# SkyReceptacle Typical Wire Configurations

## TYPICAL WIRE CONFIGURATIONS:

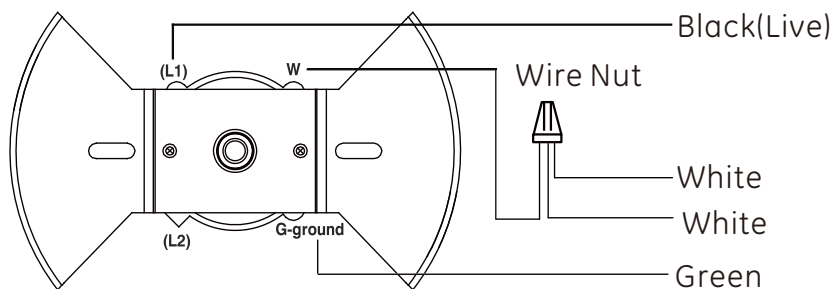
**WIRING DIAGRAM #1:**  
Typical Wiring  
Configuration  
for 1 Wall Switch



**WIRING DIAGRAM #2:**  
Typical Wiring  
Configuration  
for 2 Wall Switches



**WIRING DIAGRAM #3:**  
Wiring Configuration  
with more than 1  
of the same colored  
wires in the outlet box



**! NOTE:** If you do not have standard wiring configurations and have questions about the wiring in your outlet box, please contact a qualified electrician, or call customer service 1-866-885-4649.

**! NOTE:** If you have multiple wires connected together, add a jumper lead and insert jumper lead into terminal. Only one single wire can be inserted into terminal.

**View Installation Video@ [www.gelightingandfans.com](http://www.gelightingandfans.com)**



# SkyReceptacle Installation

Fig 1.

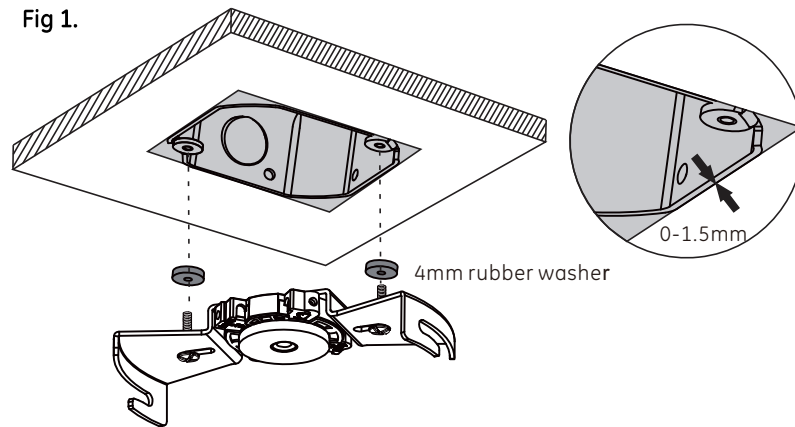


Fig 2.

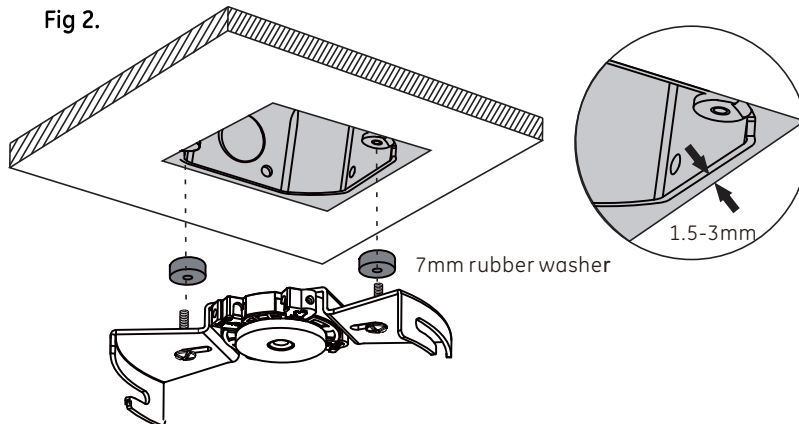
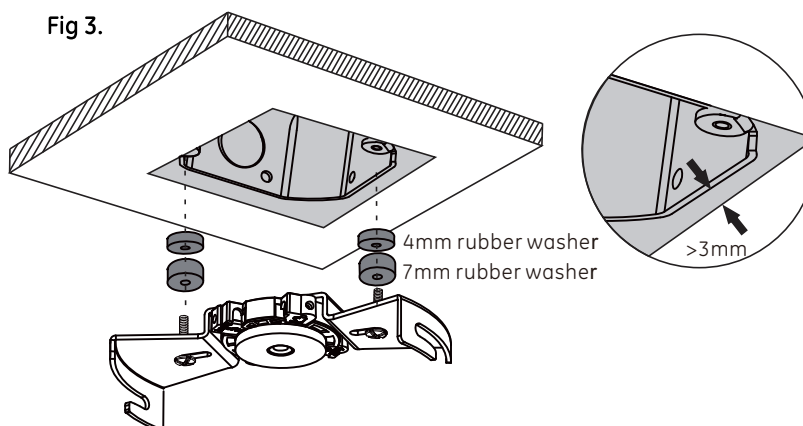
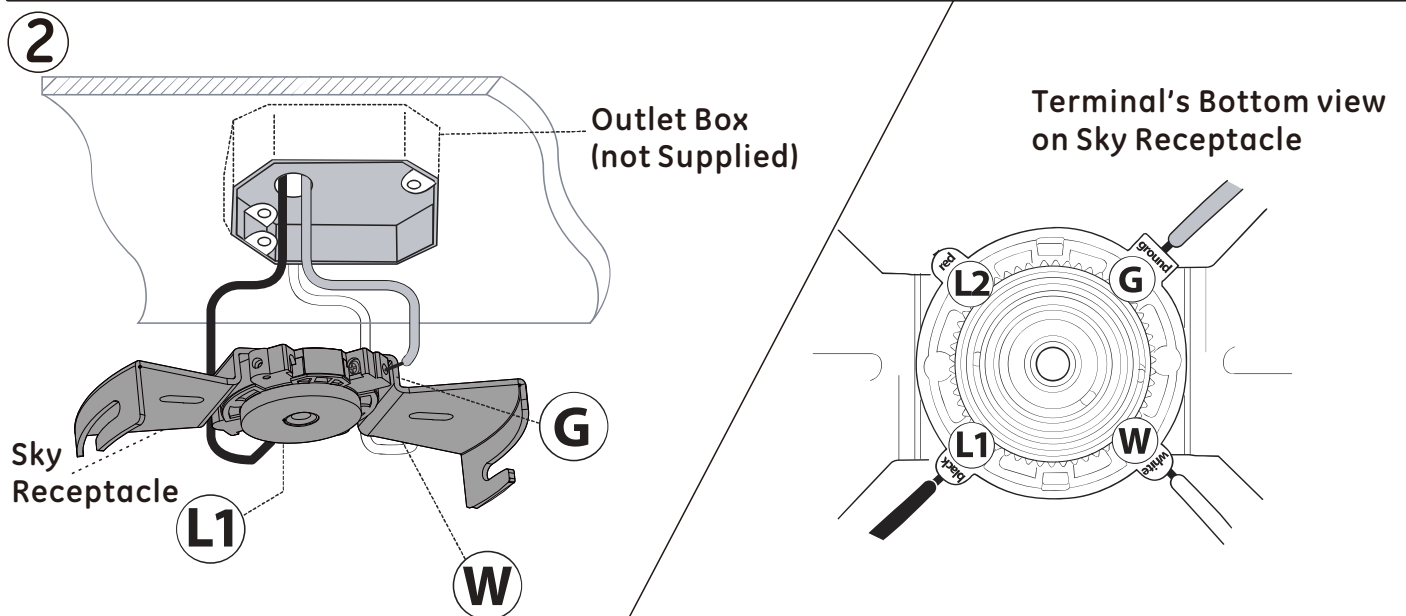
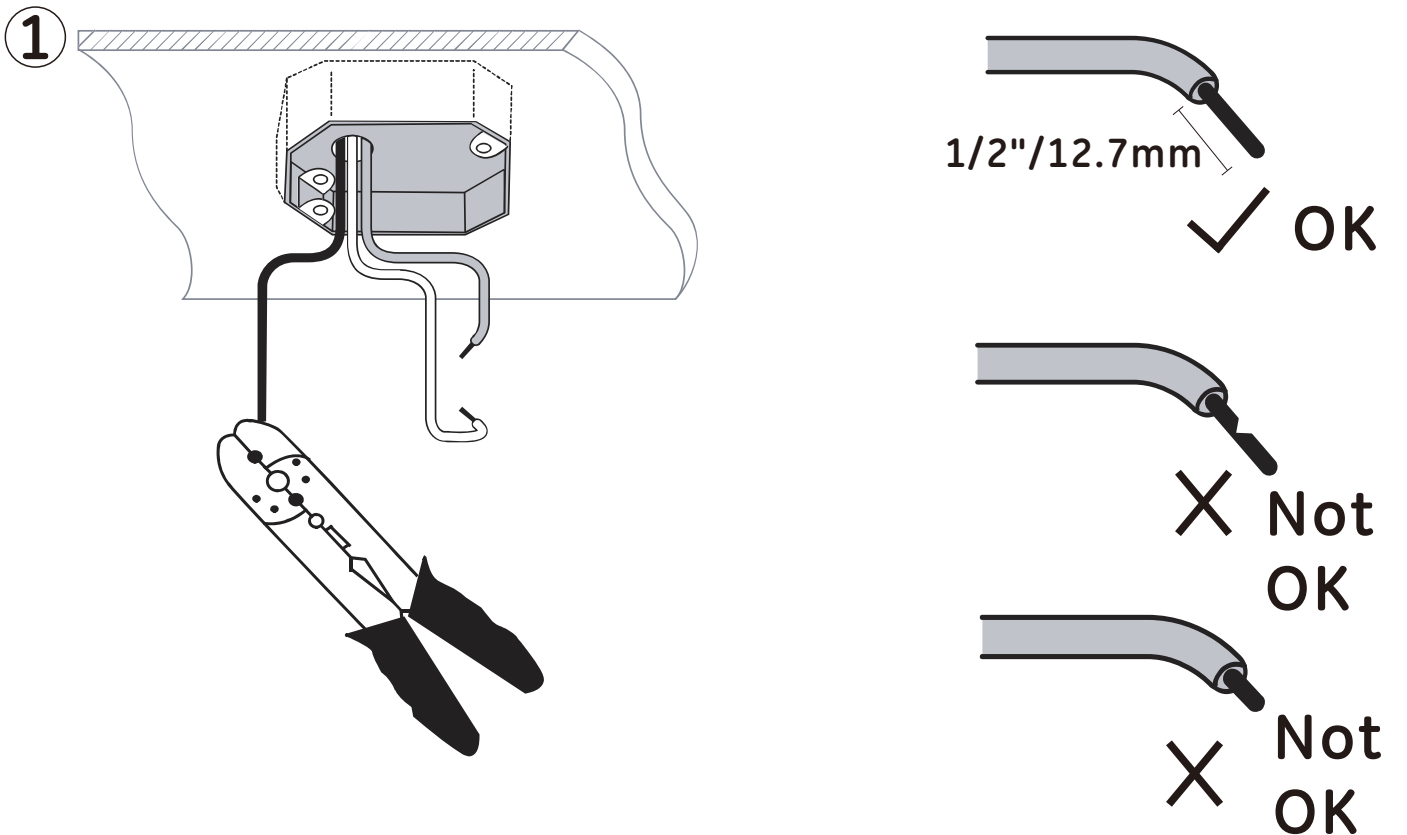


Fig 3.



**!** Important: Install SkyReceptacle with rubber washers to avoid a gap or uneven surface, and to ensure proper placement of receptacle on the ceiling.

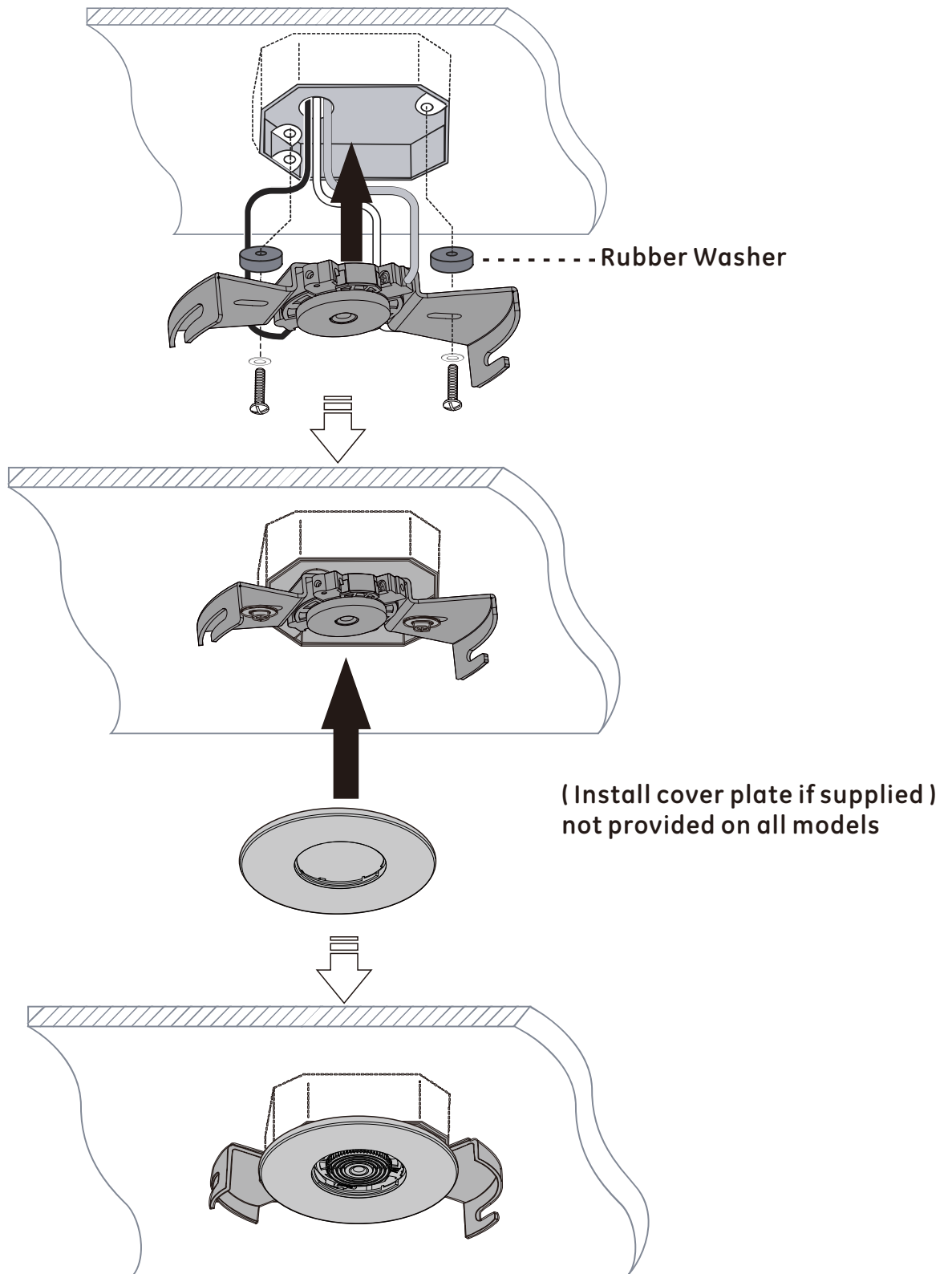
# SkyReceptacle Installation



Insert wires into terminal, tighten screw to secure wires.

# SkyReceptacle Installation

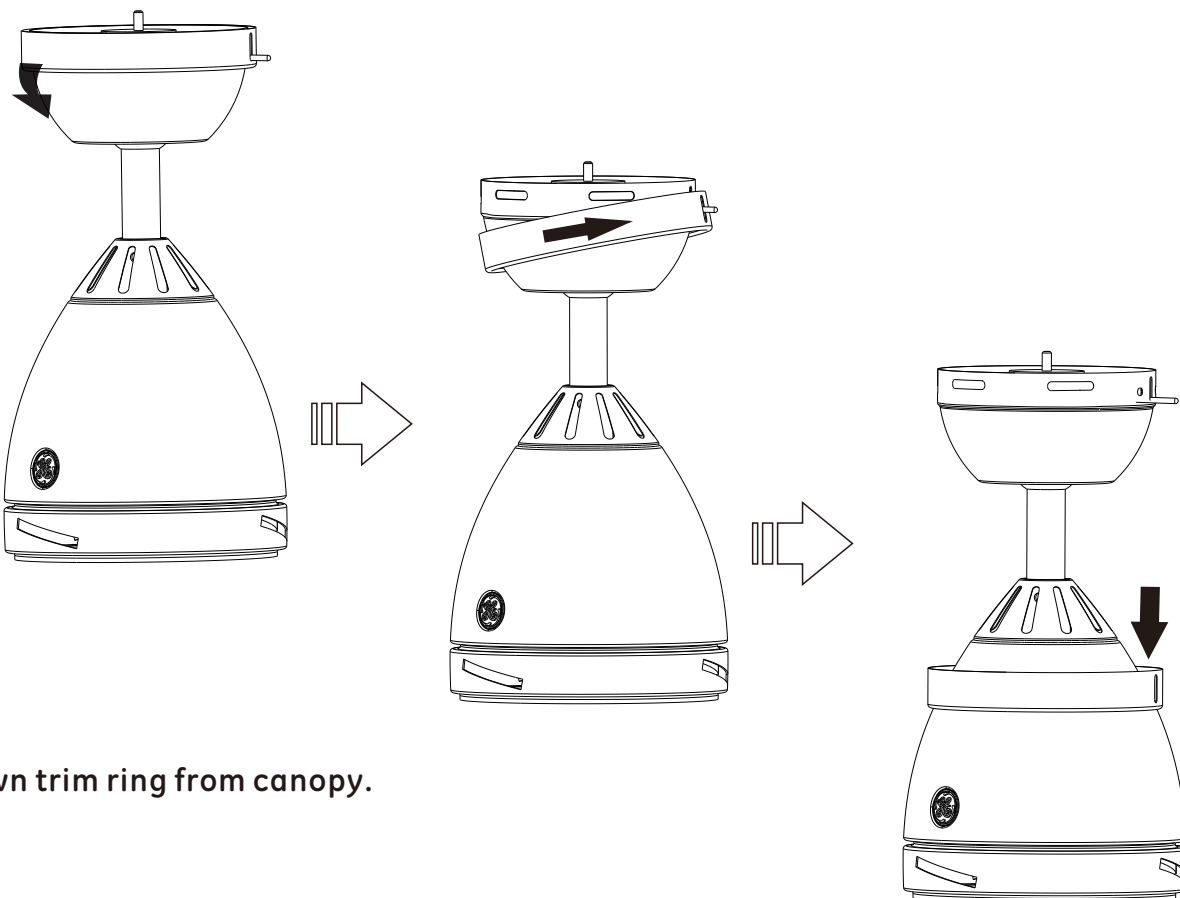
3



Using the rubber washer when installing receptacle ensures proper placement of the receptacle on the ceiling

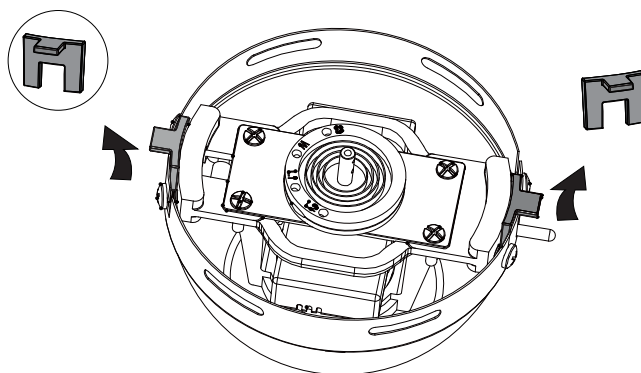
# Fan Installation

4



Slide down trim ring from canopy.

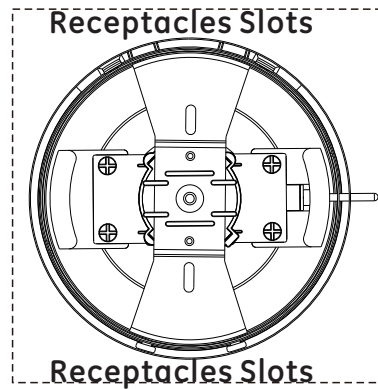
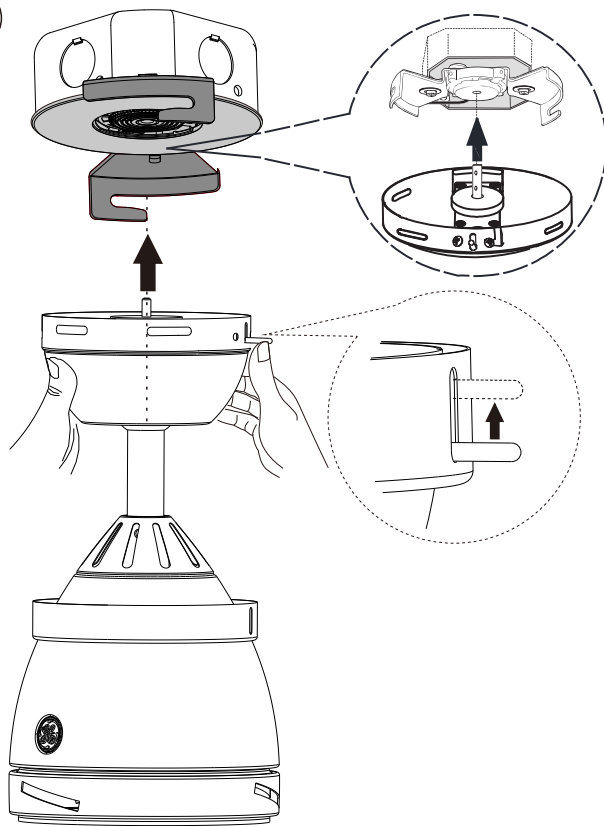
5



Remove rubber inserts from canopy and discard.

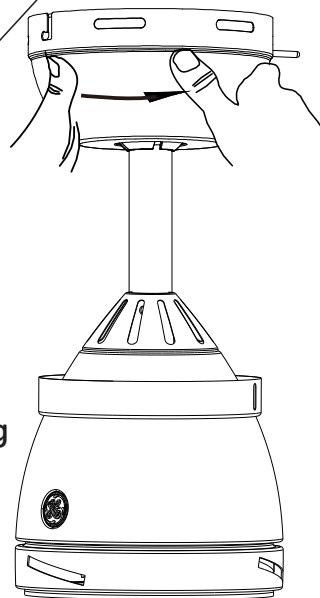
# Fan Installation

6



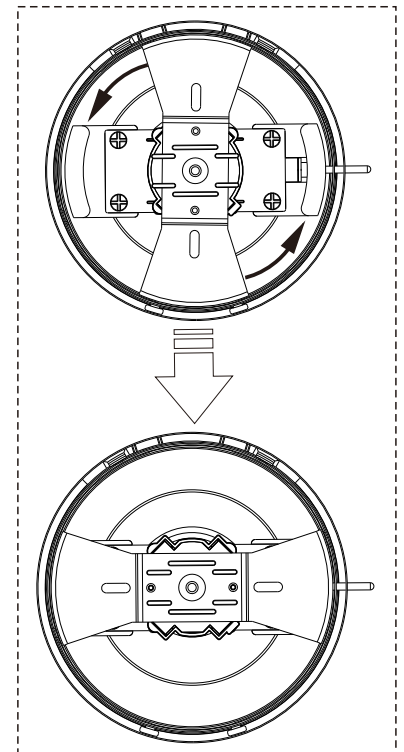
Bracket  
with Push  
Lever

Press up on the push lever while lifting the fan. For correct alignment, make sure the bracket with plug and push lever is placed between the receptacle bracket metal slots ( in a "+" formation ) as shown.



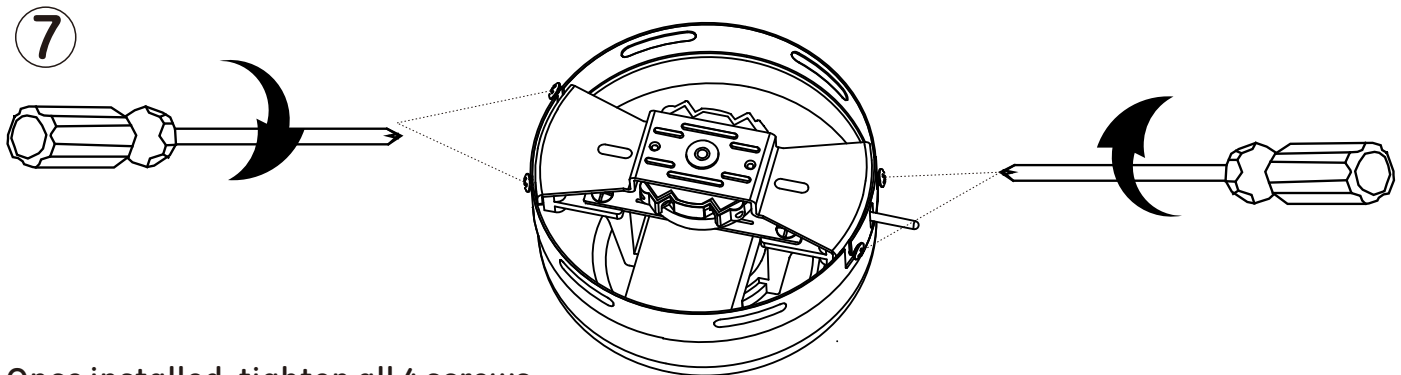
Insert the plug into the receptacle, keeping the lever pushed up while turning fan to the right. Let go of the push lever and make sure plug is fully inserted into receptacle. Continue to support fan until locked into position.

Initial "+" formation while lifting fan and inserting plug into receptacle

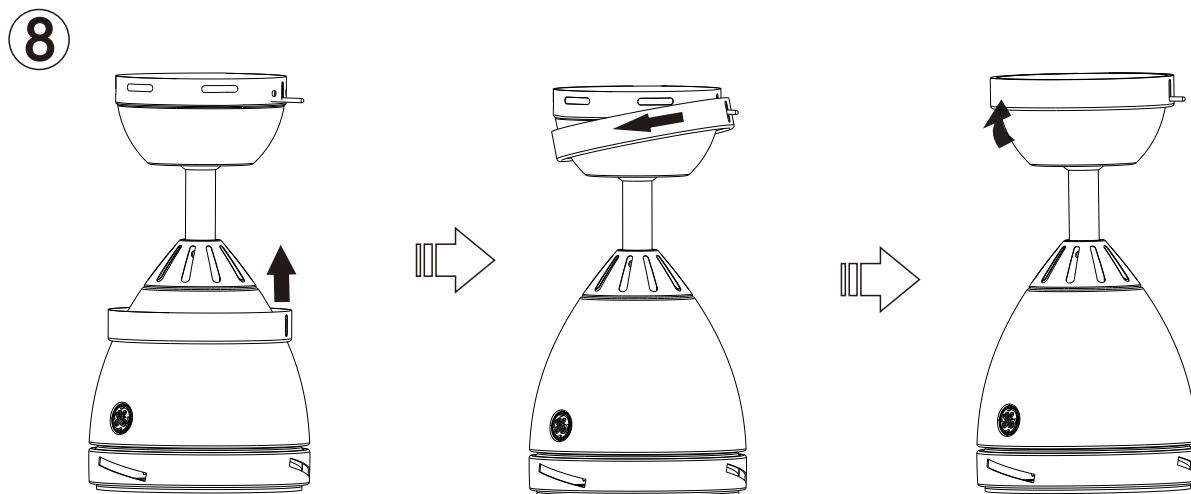


Final formation after turning fan

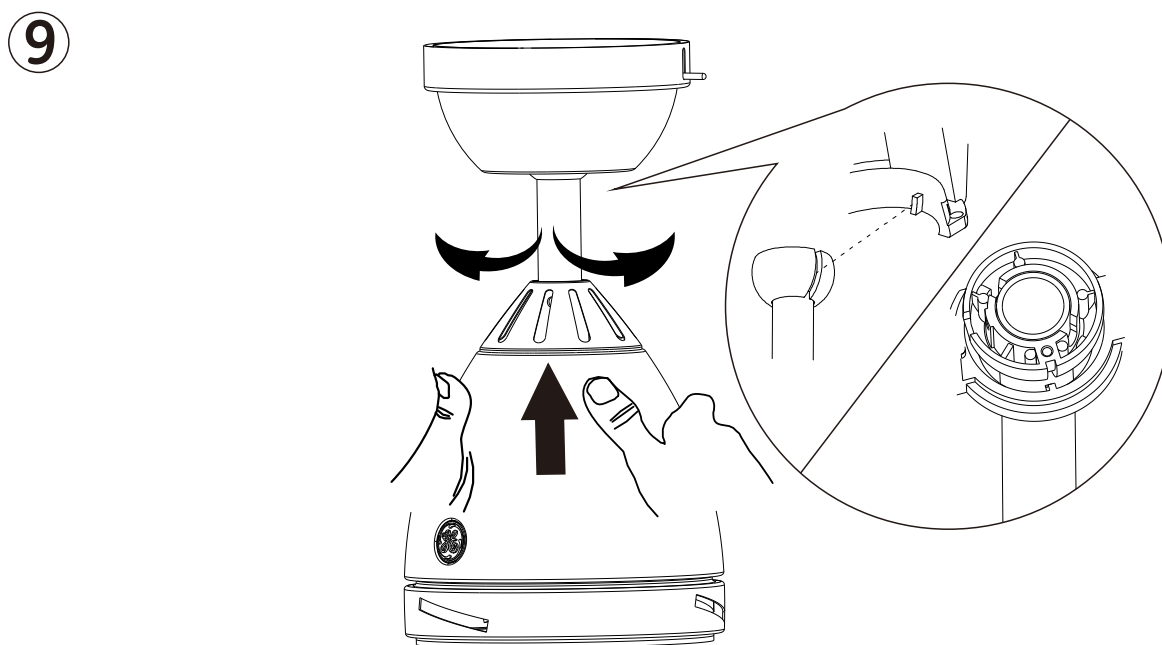
# Fan Installation



Once installed, tighten all 4 screws.



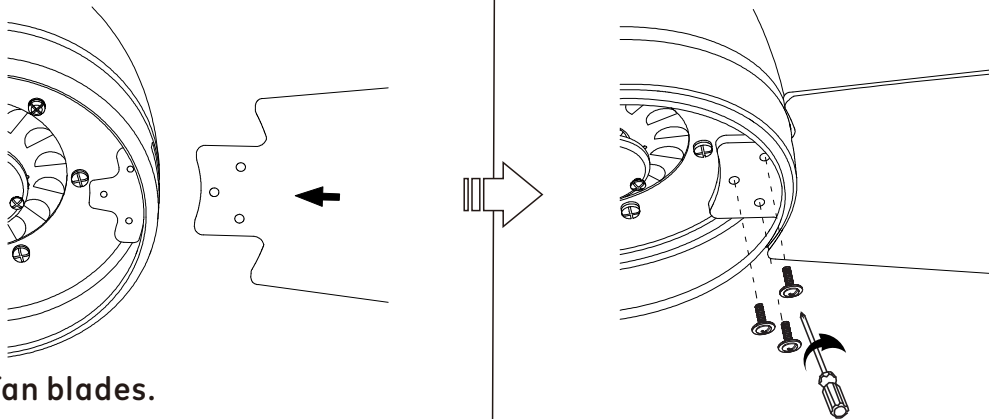
Reinstall trim ring, being careful not to depress the push lever.



Adjust fan housing so ball is properly seated in bracket.

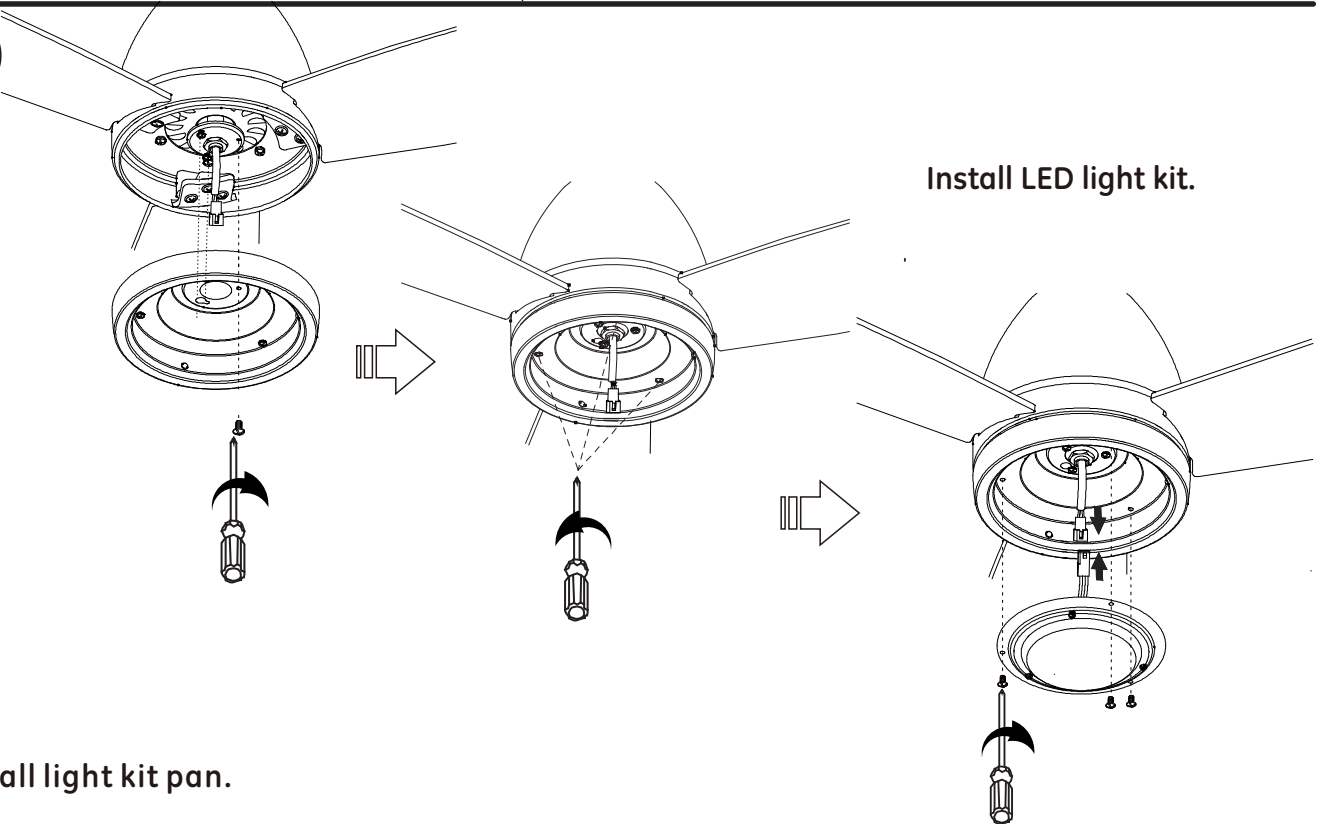
# Fan Installation

10



Install fan blades.

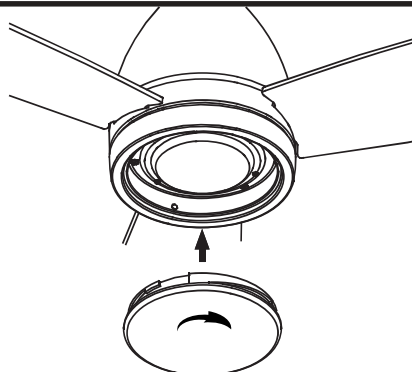
11



Install LED light kit.

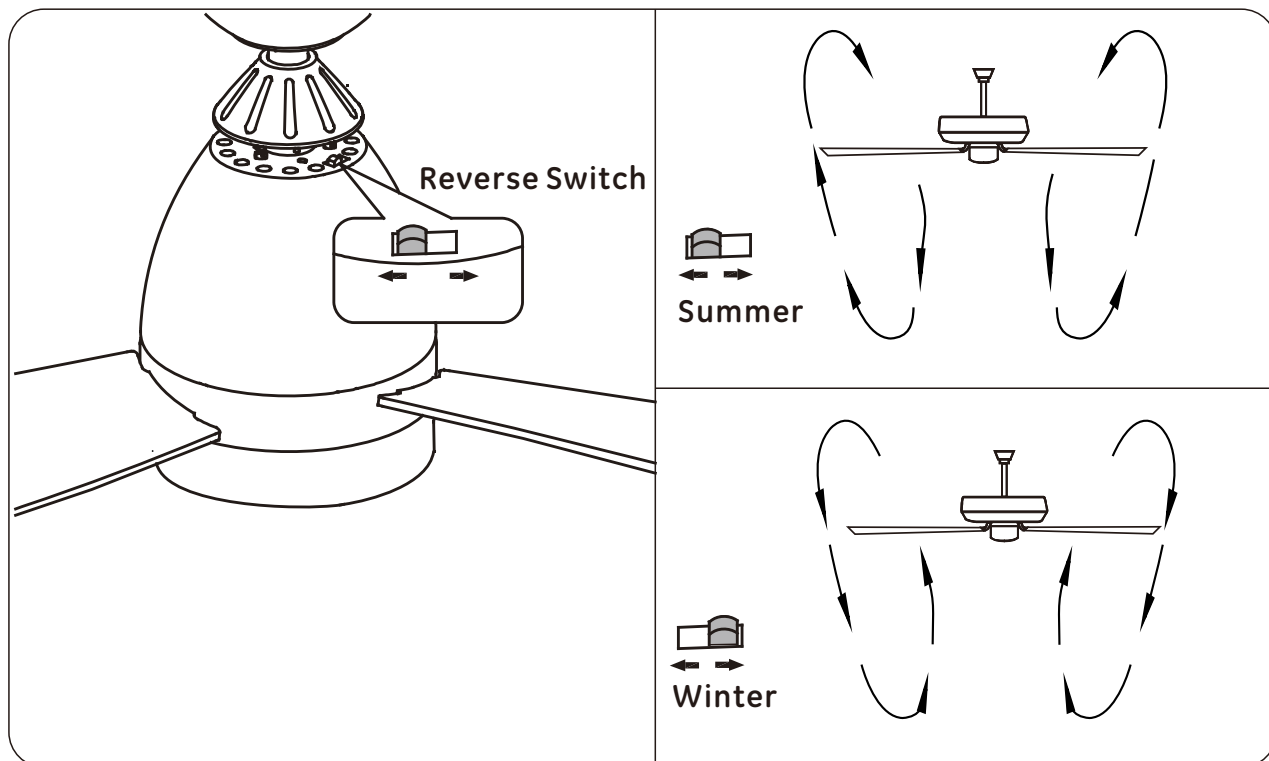
Install light kit pan.

12



Install shade-turn to secure.

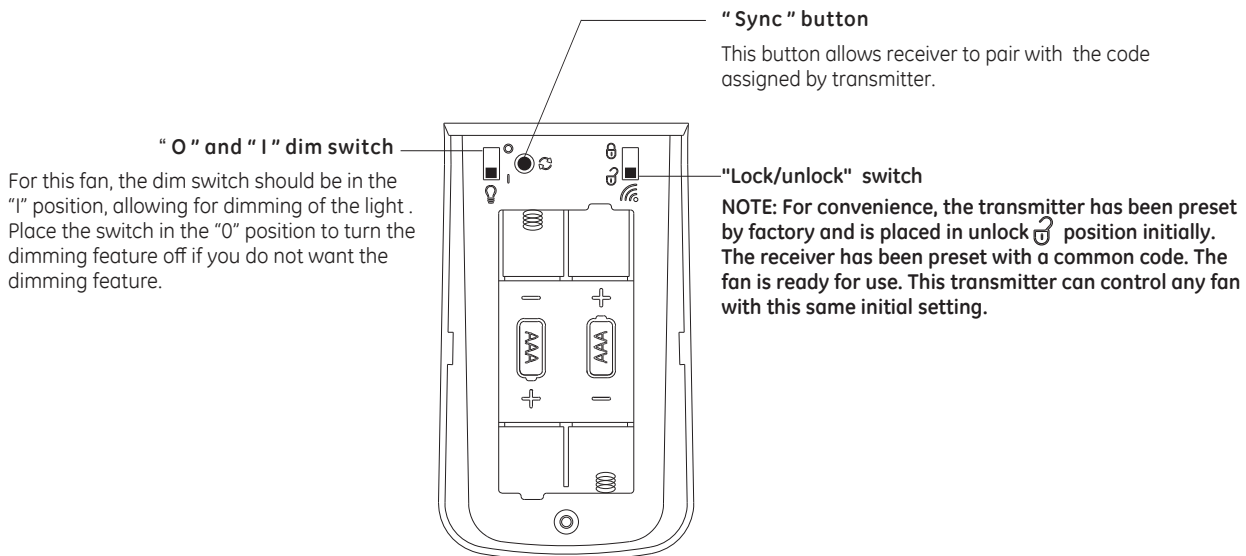
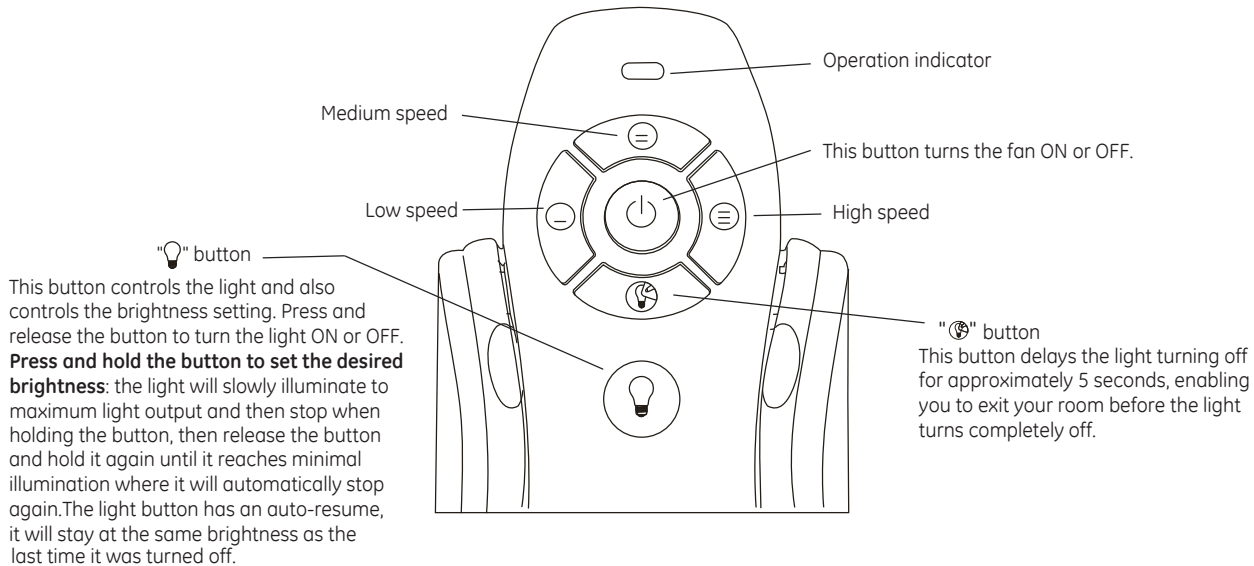
# Fan Operation








# Remote Control

## REMOTE FUNCTIONS



-Lock/unlock switch when placed in the unlock position  allows a common code to be sent.

**In the unlock  position :** The transmitter will send a common code, this transmitter will operate all other GE FANS with the same receiver configuration. But the condition is the receiver have been pre-synced with the common code, otherwise the fan will not work.

**In lock  position :** Allows a unique code to be sent to the receiver in the fan. Only the receiver of this fan will be synced with this transmitter in lock position. More than one fan can be synced with one transmitter, in this case-follow sync instruction for each fan.

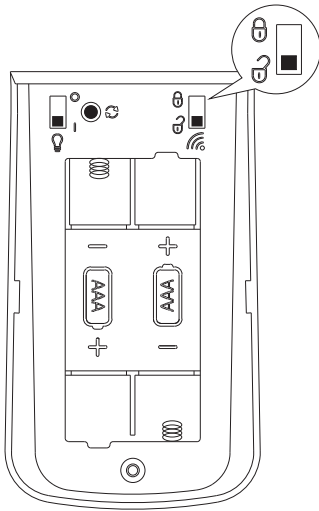
Changing the lock/unlock position will cause the code to change, and the receiver will need synchronizing again to have the same code as the transmitter.

### Note :

- To prevent damage to transmitter, remove the batteries if not used for long periods.
- Replace batteries as a simultaneous set – always replace the whole set of batteries at one time, taking care not to mix old and new ones, or batteries of different types.
- Please contact your local batteries recycling center for proper battery disposal information.

# Remote Control


## REMOTE CONTROL OPERATIONS




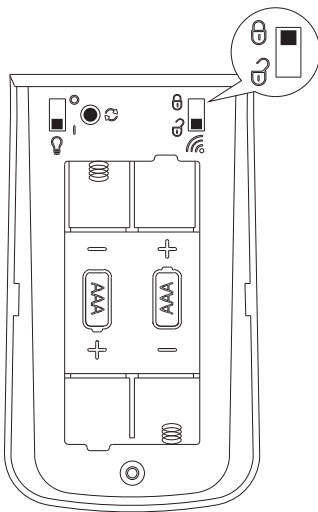
### Operate Fan using Transmitter Code Pre-Set by Factory

Step 1. Restore power to ceiling fan.

Step 2. Install two 1.5-volt AAA batteries, provided.

Step 3. Press the “” button located on the front of the transmitter to operate the fan.




Step 4: Press the “” button to operate the light. A dimmer feature is provided on the light. Press all the way down to get maximum light.



### In Case Of Interference with Several Fans, You Can Change the Transmitter Code to Operate This Fan Only.

Step 1. Switch off the power of the fan.

Step 2. Switch on the power of the fan.

Step 3. Within 30 sec, switch the lock  /unlock  switch on the back of the transmitter to lock position. and then push the sync “” button for about 5-10 sec, until the fan light kit flashes 3 times.

#### IC : 11037A-FAN61T3SP1

This device complies with RSS-210 Issue 8. Operation is subject to the following two conditions:

1. This device may not cause harmful interference, and
2. this device must accept any interference received, including interference that may cause undesired operation.

CAUTION: Any changes or modifications not expressly approved by the party responsible for compliance could void the user's authority to operate the equipment.

Note: This equipment has been tested and found to comply with the limits pursuant to RSS-210 Issue 8.

These limits are designed to provide reasonable protection against harmful interference in a residential installation. This equipment generates, uses and can radiate radio frequency energy and, if not installed and used in accordance with the instructions, may cause harmful interference to radio communications. However, there is no guarantee that interference will not occur in a particular installation. If this equipment does cause harmful interference to radio or television reception, which can be determined by turning the equipment off and on, the user is encouraged to try to correct the interference by one or more of the following measures:

- Reorient or relocate the receiving antenna.
- Increase the separation between the equipment and the receiver.
- Connect the equipment into an outlet on a circuit different from that to which the receiver is connected.
- Consult the dealer or experienced radio /TV technician for help.

# Remote Control Pairing Instructions

## REMOTE CONTROL PAIRING INSTRUCTIONS:

**Important Note :** By default, every fan has been pre-programmed at the factory and should be fully functional once installation is completed. There is no need to perform the pairing process.

Make sure all wiring connections have been properly made and are secure.  
Make sure batteries are installed correctly in the transmitter.  
Make sure batteries have a full charge or replace with new batteries.  
Make sure all switches of the power supply to the fan motor are turned on.

Should you find the fan or remote control not working or not fully functional after installation or during use, pairing of the remote control can be done by following the below simple procedures.  
Note, however, that there could be other reasons as to why a fan or a remote control is not working:

## PROCEDURES FOR PAIRING RECEIVER AND TRANSMITTER:

The remote is not functioning properly, and you want to reset a fan remote control, or  
You are replacing the original transmitter or receiver, or  
You have multiple ceiling fans of the same model in one location and you wish to be able to control them with one remote.

## IF USING ONE REMOTE CONTROL TO CONTROL MULTIPLE FANS

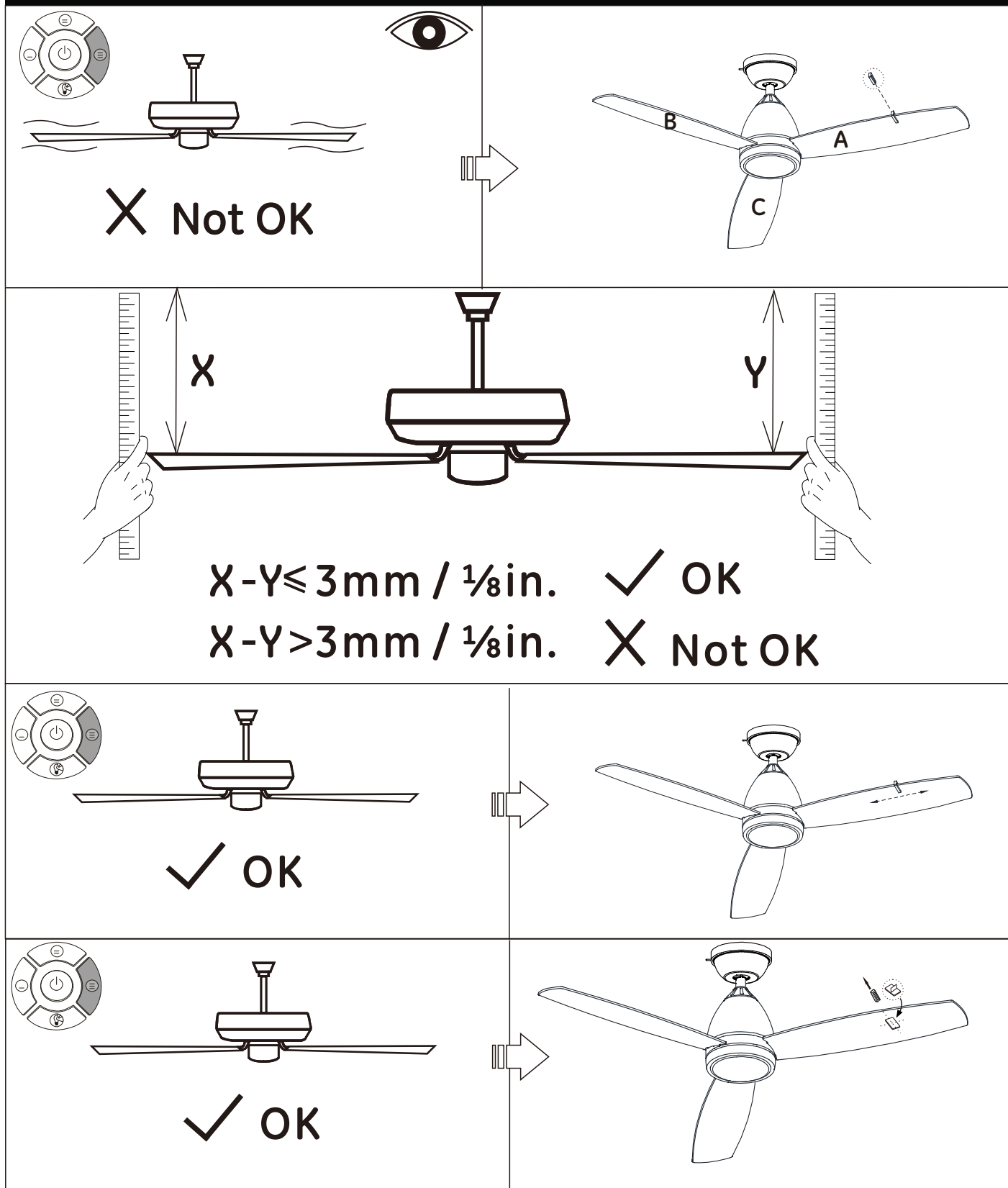
1. Turn OFF the power/isolation switch to ALL fans that you would like to program to the same hand held remote.
2. Remove the battery cover to access the "Sync" switch on the hand held remote.
3. Install two 1.5 V AAA batteries and make sure the polarity of the batteries is correct.
4. Turn on the power/isolation switch to ALL fans.
5. Press the "Sync" switch with the corner of the battery cover (you can also use a small screwdriver or ballpoint pen) to change the frequency settings within 30 seconds after restoring the power. The lights will flash (on/off) 3 times and remain bright, then the pairing process is complete.
6. Try different speed settings on the transmitter to ensure all the fans are now fully functional. If not, repeat the process starting from Step 1 again.

## TO RESET INDIVIDUAL REMOTE CONTROL FOR EACH FAN/INSTALLING A NEW RECEIVER

Note: If you have more than one fan of the same model but wish to only perform the pairing on one fan, follow the same steps starting from step 1 to step 6. Make sure to only power ON one fan at a time, and power OFF all the nearby fans to avoid picking up the same signal.

1. Turn OFF the power/isolation switch to the fan.
2. Remove the battery cover to access the "Sync" switch on the hand held remote.
3. Install two 1.5 V AAA batteries and make sure the polarity of the batteries is correct.
4. Turn on the power/isolation switch to the fan.
5. Press the "Sync" switch with the corner of the battery cover (you can also use a small screwdriver or ballpoint pen) to change the frequency settings within 30 seconds after restoring the power. The light will flash (on/off) 3 times and remain bright, then the pairing process is complete.
6. Try different speed settings on the transmitter to ensure the fan is now fully functional. If not, repeat the process starting from Step 1 again.

# Blade Wobble Balancing



# Maintenance

## PRODUCT MAINTENANCE

### \* Suggestions to help you maintain your fan \*

Because of the fan's natural movement, some connections may become loose. Check the support connections, brackets, and blade attachments twice a year. Make sure they are secure. (It is not necessary to remove fan from ceiling).

### \* Cleaning the fan \*

Clean your fan periodically to help maintain its new appearance over the years. Use only a soft brush or lint-free cloth to avoid scratching the finish. The plating is sealed with a lacquer to minimize discoloration or tarnishing. Do not use water when cleaning. This could damage the motor, the wood, or possibly cause an electrical shock.

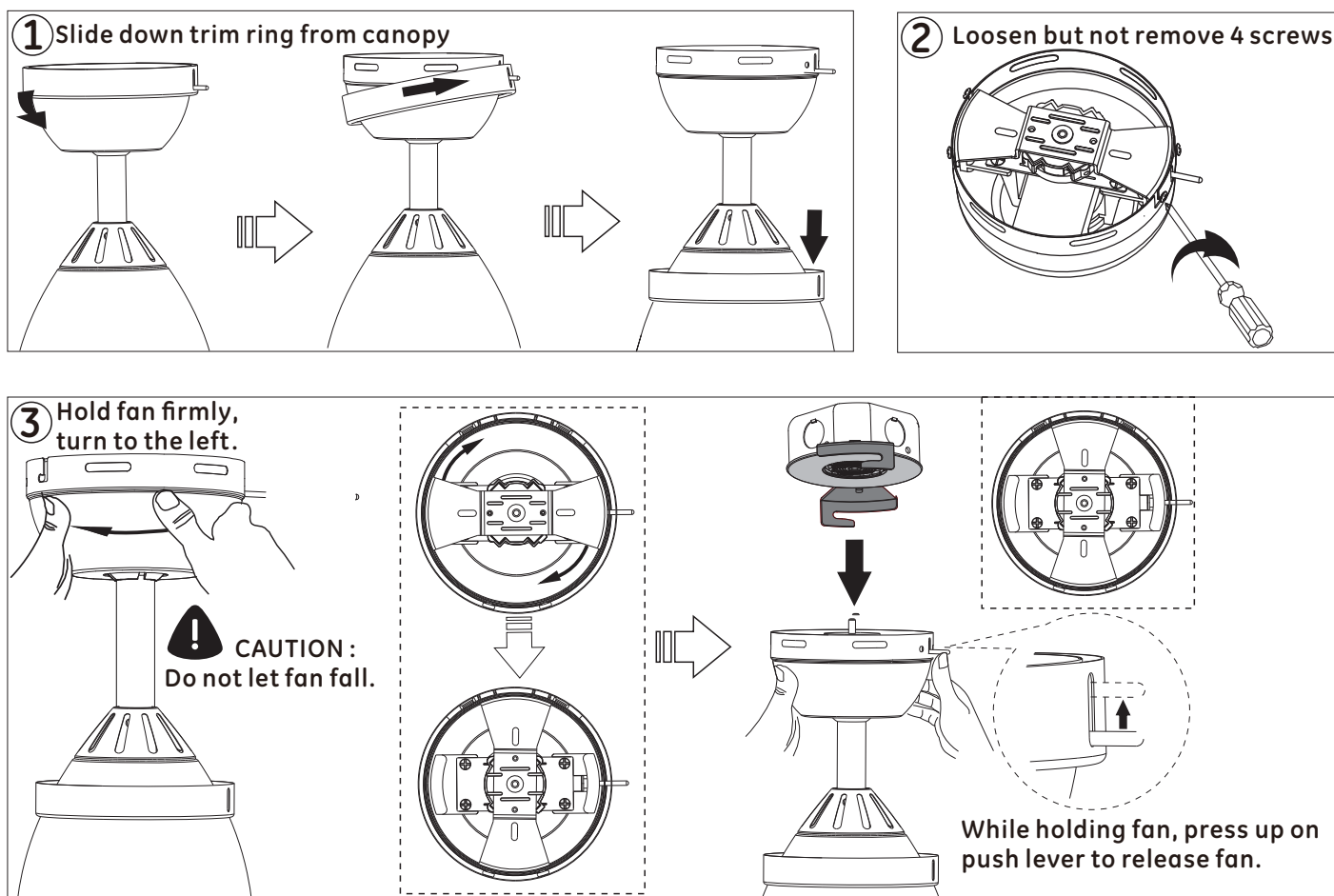
**\* There is no need to oil your fan. The motor has permanently lubricated sealed ball bearings \***

**\* WARNING: Make sure the power is turned off at the electrical panel box before you attempt any repairs \***

**\*NOTE: To avoid personal injury or damage to the fan and other items, be cautious when working around or cleaning the fan\***

**\*NOTE: Do not use water or detergents when cleaning the fan or fan blades. A dry dust cloth or lightly damp cloth will be suitable for cleaning\***

## Removing fan from ceiling



# Troubleshooting



**CAUTION:** Switch off power supply before carrying out any of these checks.

## 1. Fan will not start:

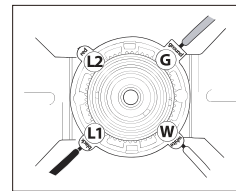
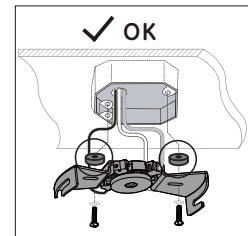
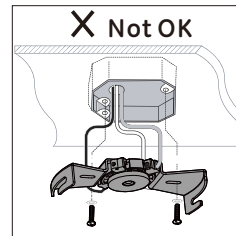
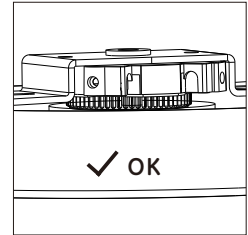
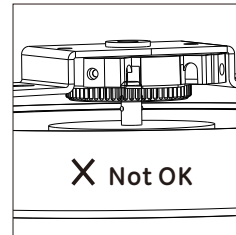
- Check main and branch circuit fuses or breakers.
- Check to make sure the wall switch is in the on position.
- Check remote control operation.

## 2. Fan will not operate:

- The SkyPlug on the fan canopy should be fully inserted into the receptacle. There are 2 levels of ball bearings on the plug stem. The lower set of ball bearing needs to be fully inserted into the SkyReceptacle.

-Ensure the 4mm (or combination of washers) was used when installing the SkyReceptacle on the ceiling. ( You may have an uneven outlet box). The SkyPlug must fully insert into the receptacle to make the electrical connection.

-Ensure you inserted the wires correctly into the SkyReceptacle. Black wire into L1, White wire into W, Ground into G.



## 3. Fan sounds noisy:

- Make sure all motor housing screws are snug.
- Make sure the screws that attach the fan blade bracket to the motor hub is tight.
- Make sure wire nut connections are not rattling against each other or the interior wall of the switch housing.
- Allow a 24-hour "breaking-in" period. Most noises associated with a new fan disappear during this time.
- If using a ceiling fan light kit, make sure the screws securing the glassware are tight. Check that the light bulb is also secure.
- Make sure there is a short distance from the ceiling to the canopy. It should not touch the ceiling.
- Make sure your ceiling box is secure and rubber isolator pads are used between mounting bracket and outlet box.

## 4. The LED will not light:

- Ensure the 2-pin connector is attached/inserted correctly.
- Ensure the power supply is turned on.
- Ensure the circuit breaker is set to "ON" position.

## 5. Remote control will not work:

- Ensure batteries are new and installed correctly.
- Ensure the dip switches are set correctly.
- Pair the remote control by following the pairing procedure on page 18.



is a trademark of General Electric Company  
and is under license by SQL Lighting and Fans, LLC  
4400 North Point Parkway, Suite 154, Alpharetta, GA 30022